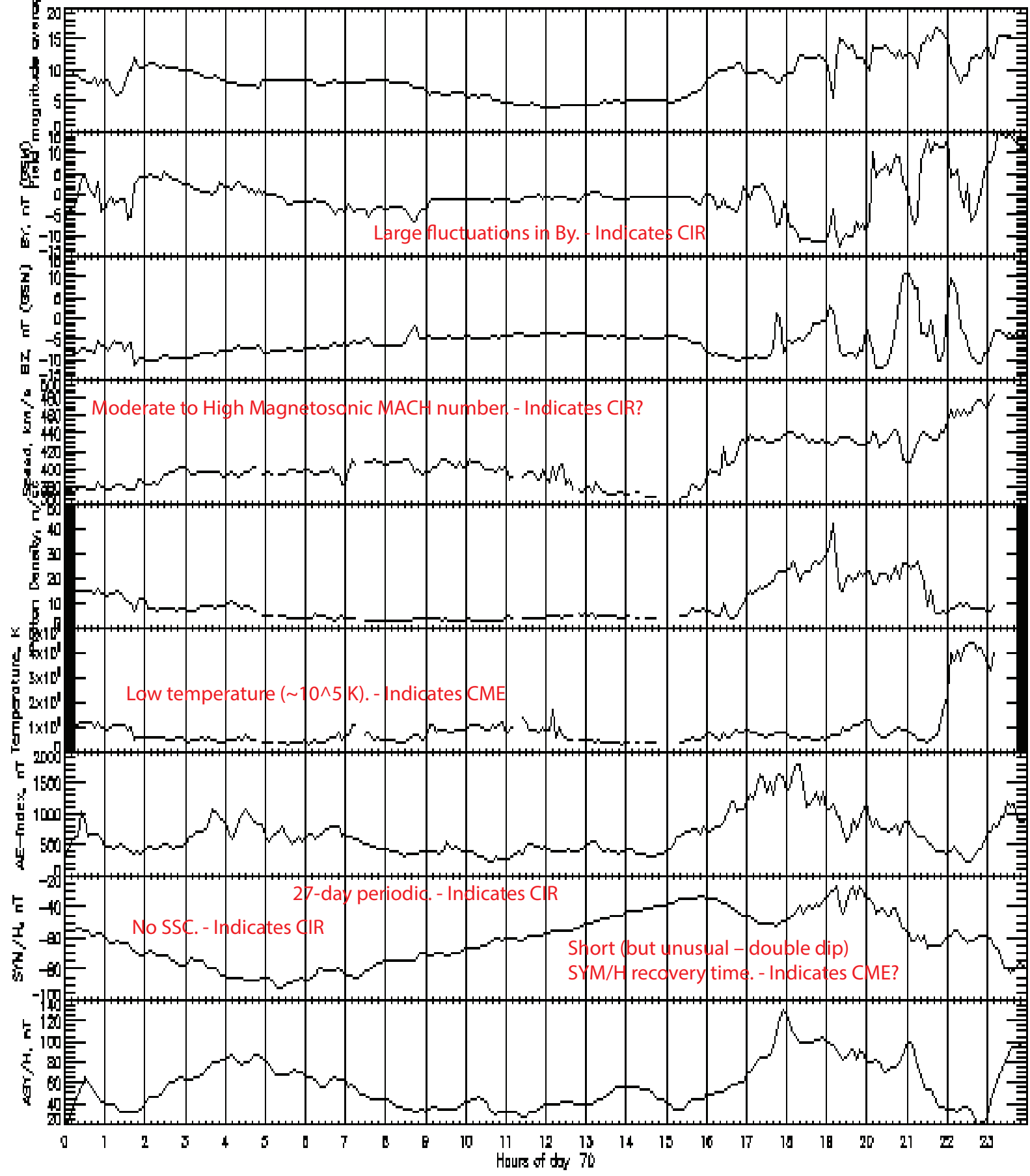


5-min res. OMNI data set



The solar wind parameters as a function of time are obtained from the OMNI web site, http://omniweb.gsfc.nasa.gov/omsc_min.html. This data set compiled by NASA's Space Physics Data Facility includes data from ACE, Wind, IMP 8 and Geotail satellite missions. The data is shifted in time to the bow shock nose. Field and plasma parameters are determined at an appropriate time.